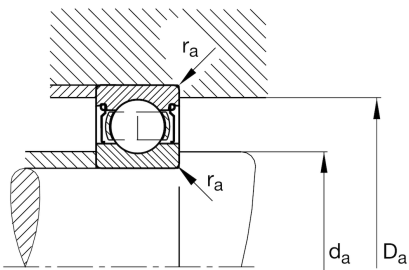
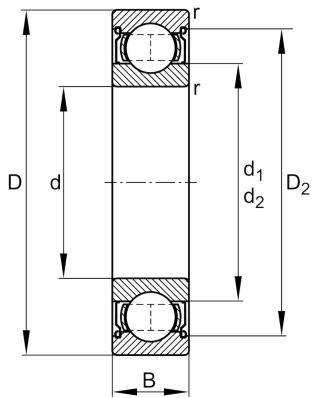
**FAG****6210-2Z**

Deep groove ball bearing

Schaeffler ID:
0167206870000Deep groove ball bearing 62...-2Z, single
row, shields, steel sheet metal cage

Technical information

**Dimensions**

r_{\min}	1.1 mm	Minimum chamfer dimension
D_2	80 mm	Caliber diameter outer ring
d_1	62 mm	Shoulder diameter inner ring
	0.464 kg	Weight

Main Dimensions & Performance Data

d	50 mm	Bore diameter
D	90 mm	Outside diameter
B	20 mm	Width
C_r	39,000 N	Basic dynamic load rating, radial
C_{0r}	24,200 N	Basic static load rating, radial
C_{ur}	1,460 N	Fatigue load limit, radial
n_G	9,000 1/min	Limiting speed
n_{gr}	8,200 1/min	Reference speed

Mounting dimensions

$d_{a\min}$	57 mm	Minimum diameter shaft shoulder
$D_{a\max}$	83 mm	Maximum diameter of housing shoulder
$r_{a\max}$	1.1 mm	Maximum fillet radius

Calculation factors

f_0	14.3	Calculation factor
-------	------	--------------------

Temperature range

T_{\min}	-20 °C	Operating temperature min.
T_{\max}	120 °C	Operating temperature max.